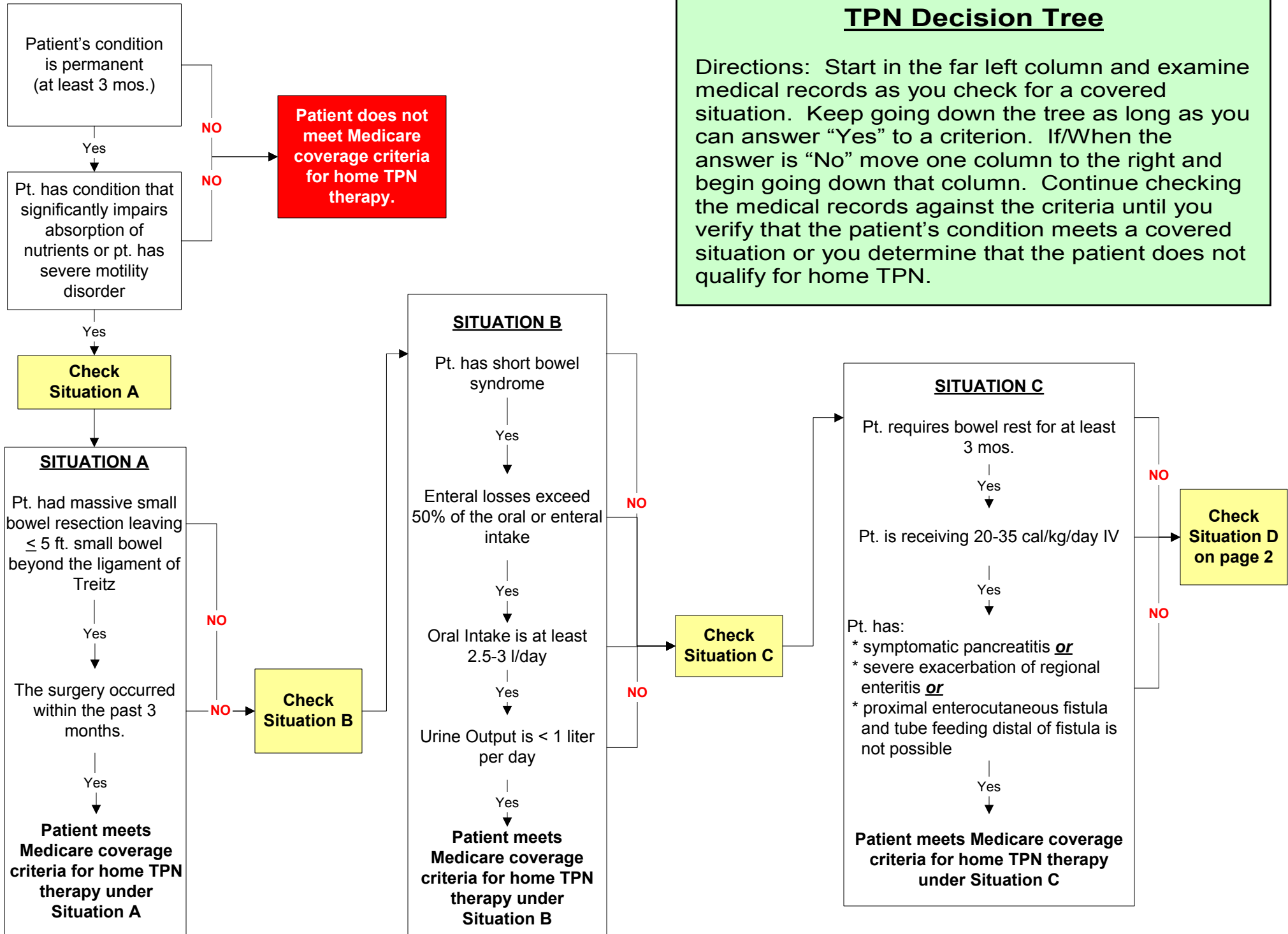


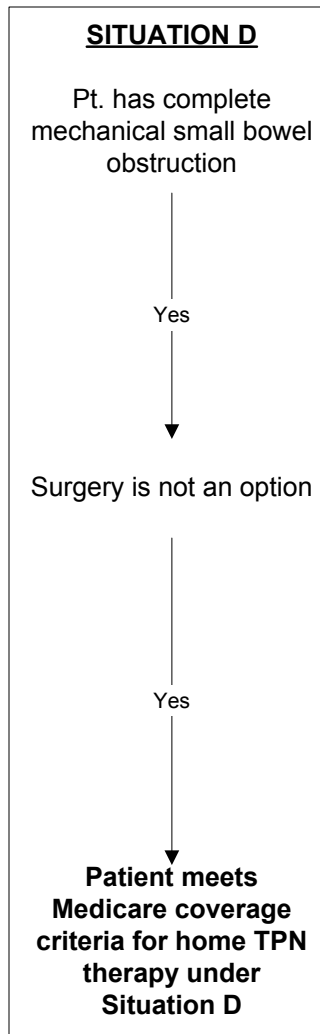
TPN Decision Tree

Directions: Start in the far left column and examine medical records as you check for a covered situation. Keep going down the tree as long as you can answer "Yes" to a criterion. If/When the answer is "No" move one column to the right and begin going down that column. Continue checking the medical records against the criteria until you verify that the patient's condition meets a covered situation or you determine that the patient does not qualify for home TPN.

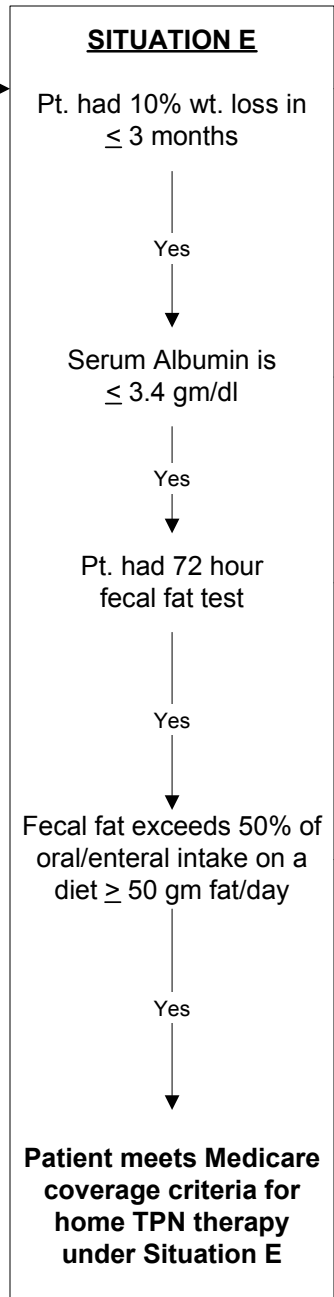


TPN Decision Tree

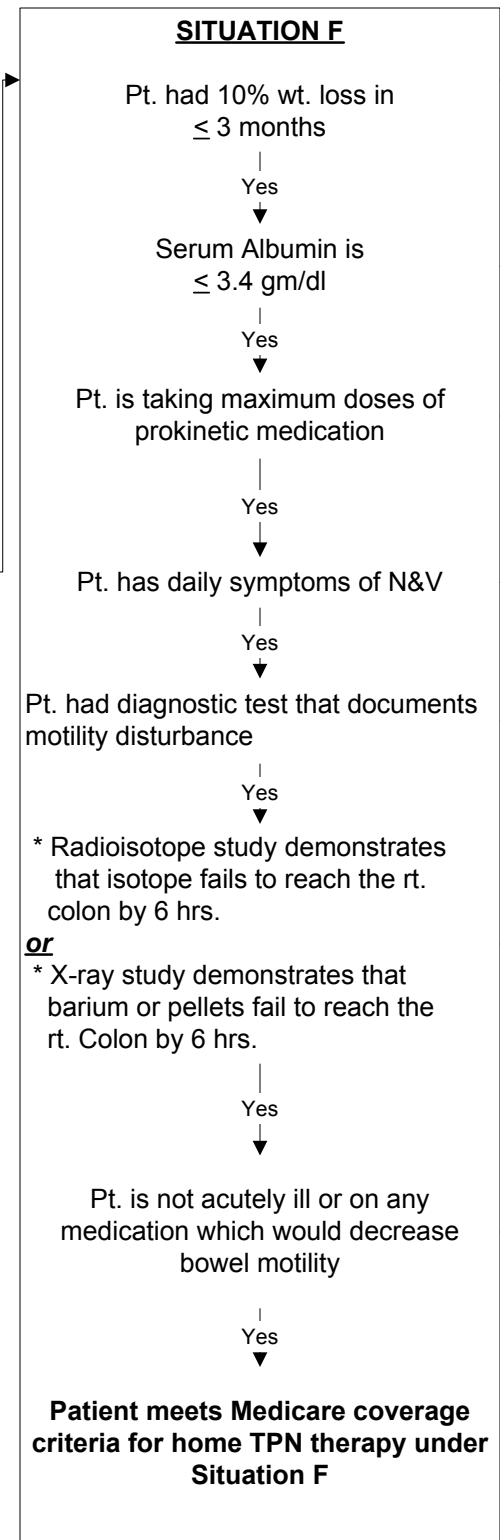
Page 2



Check Situation E



Check Situation F



Check Situation G/H on page 3

TPN Decision Tree

Page 3

SITUATIONS G/H

Pt. had 10% wt. loss in \leq 3 months

AND

Serum Albumin is \leq 3.4 gm/dl

AND

Altering the nutrient composition of an enteral diet will not maintain the patient's health status

AND

The patient's health status cannot be maintained by administering medications to treat the etiology of the malabsorption

Yes



Pt. has moderate abnormality such as:

*72° fecal fat study shows fecal fat is $>$ 25% of oral/enteral intake on a diet \geq 50 gm fat/day

or

*Dx of malabsorption with objective confirmation by methods other than 72° fecal fat test (Sudan stain of stool, d-xylose, etc.

or

*Gastroparesis demonstrated by study that shows the isotope, barium or pellets failed to reach the rt. colon in 3-6 hr or results **or** manometric motility study was consistent with abnormal gastric emptying that was unresponsive to prokinetic medication

or

*Small bowel motility disturbance which is unresponsive to prokinetic medication, demonstrated with a gastric to rt colon transit time between 3-6 hrs

or

*Small bowel resection that left $>$ 5 ft of small bowel beyond the ligament of Treitz

or

*Short bowel syndrome not as severe as Situation B

or

*Mild to moderate exacerbation of regional enteritis or enterocutaneous fistula

or

*Partial mechanical small bowel obstruction where surgery is not an option

Yes



Medical Records document a failed Tube Trial

Yes



Patient meets Medicare coverage criteria for home TPN therapy under Situations G/H

NO

NO

Patient does not meet Medicare coverage criteria for home TPN therapy.